



PAPER SOUND PAPER SOUND PAPER SOUND PAPER SOUND

Difficulty



REGGAE ROAST SOUND SYSTEM

Tutorial



PAPER
SOUND

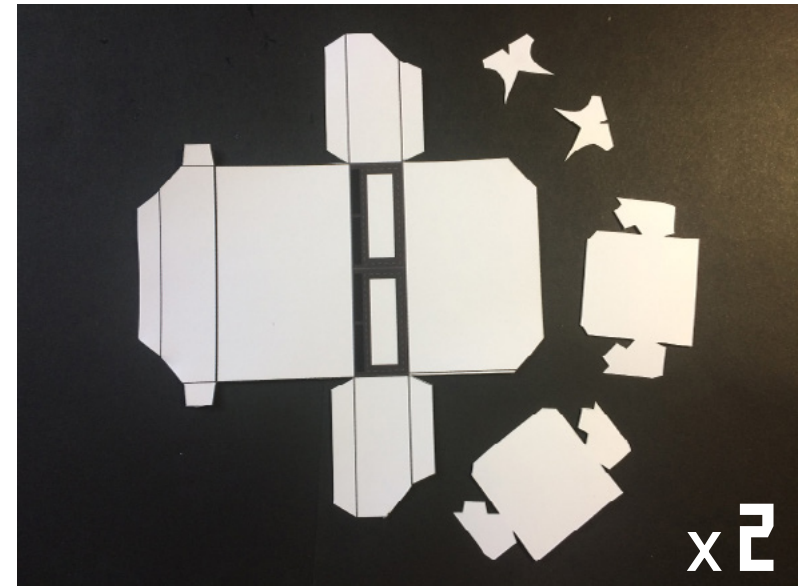
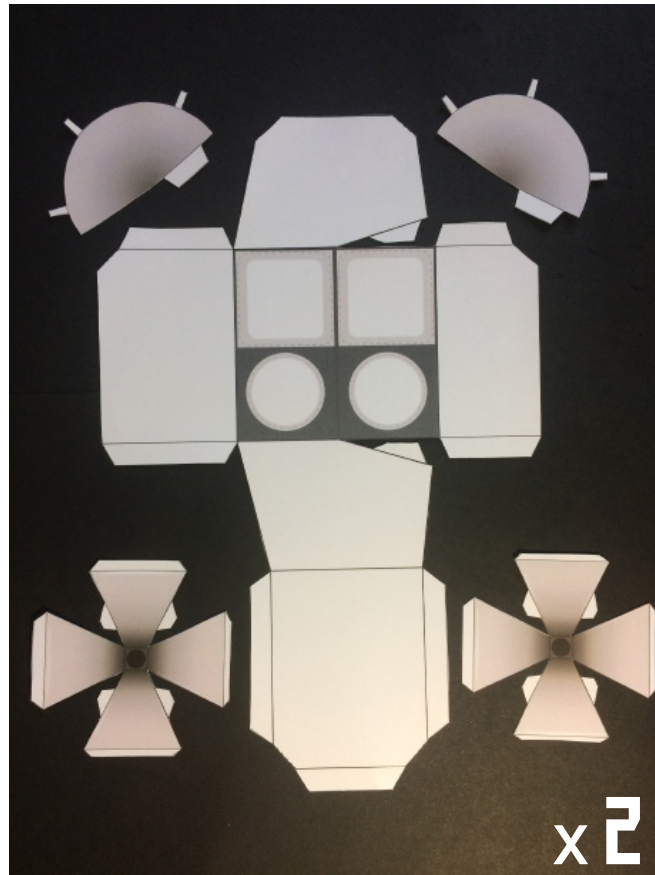
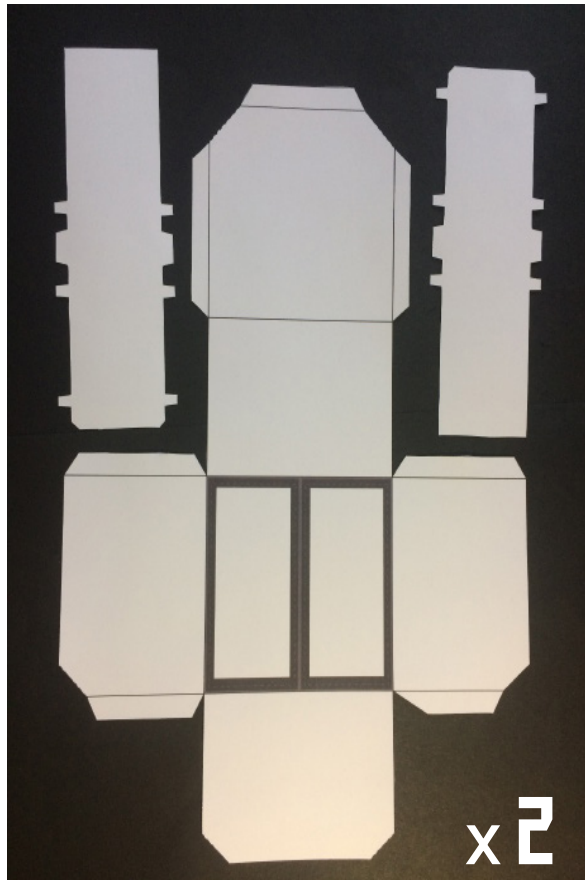
Made by

irie.

STEP 1

Cutting

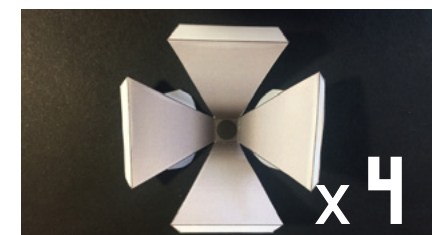
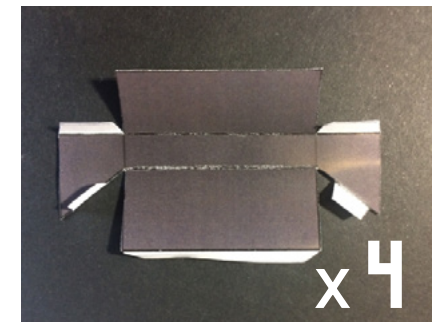
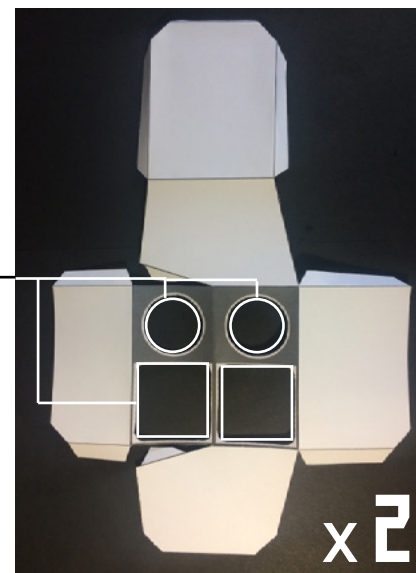
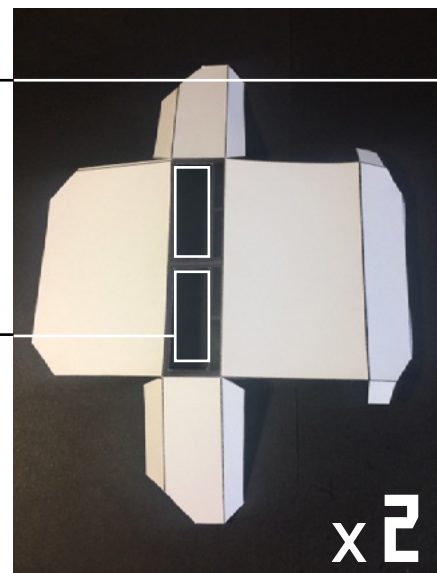
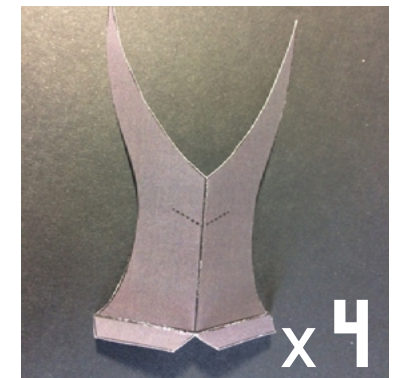
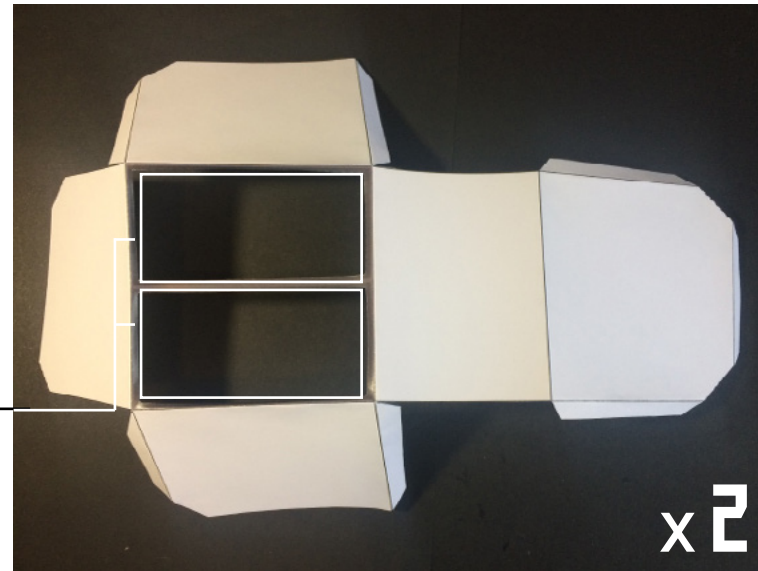
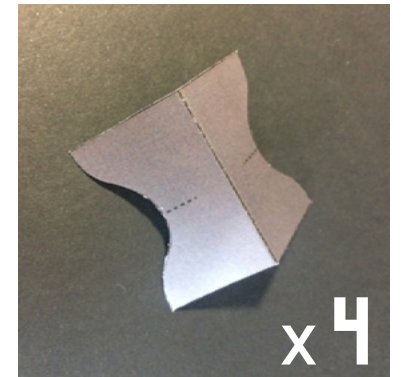
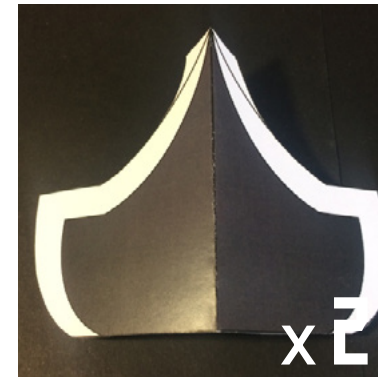
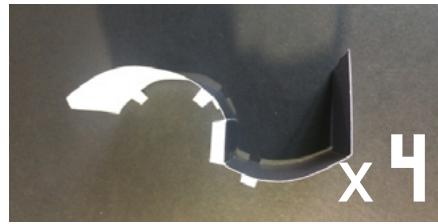
Cut all dotted lines corners



STEP 2

Folding

Remember to cut the lower part of the boxes (dotted lines) Do it after the folding.

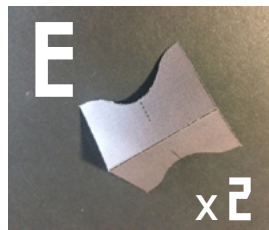
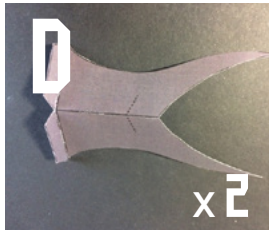
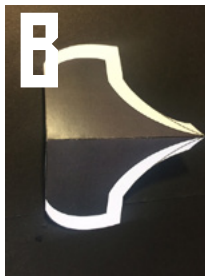


STEP 3

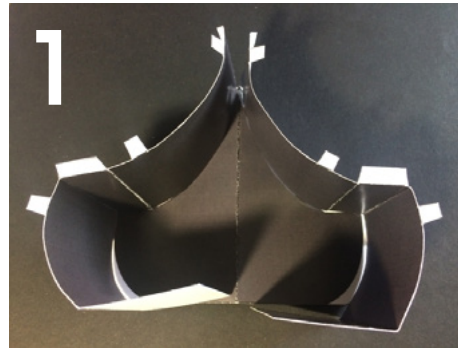
Assembly/Gluing

Do it twice

Parts to use

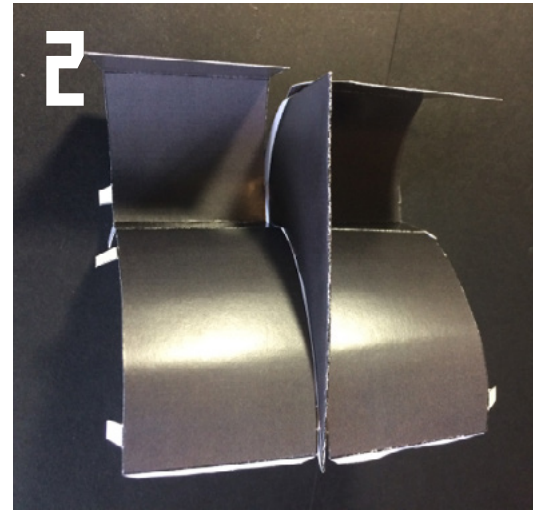


Align parts « C » on the black shape « B » then stick using the tabs

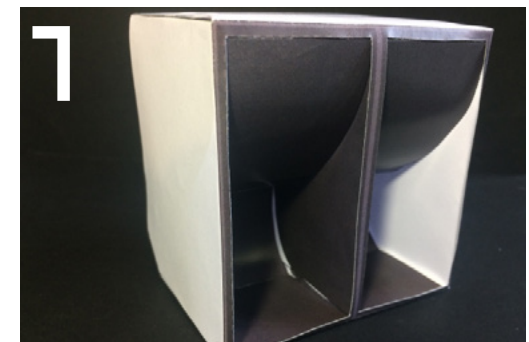


Stick the low part of scoops just putting glue on half, like picture above. Like this, you'll manage to slide and glue the tab of the side face under the non-glued part (see step 5)

Fold and stick on itself the B part



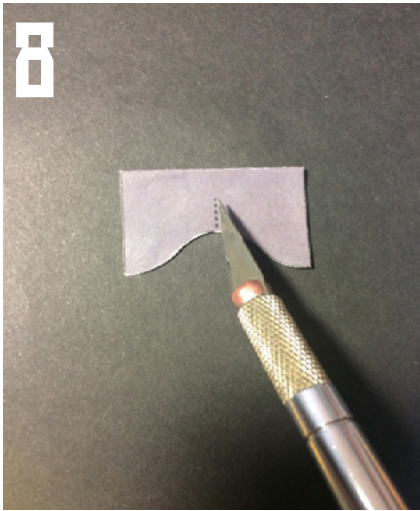
Stick the whole things on A part on the cutted rectangle level. Start with the top tabs



Close the whole thing

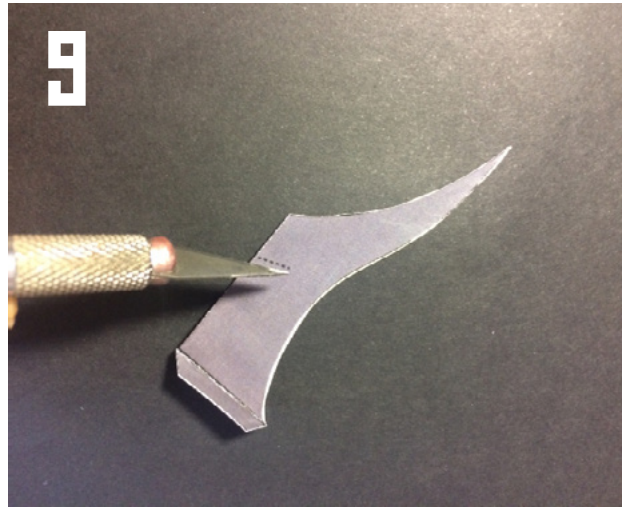
STEP 3.1

8



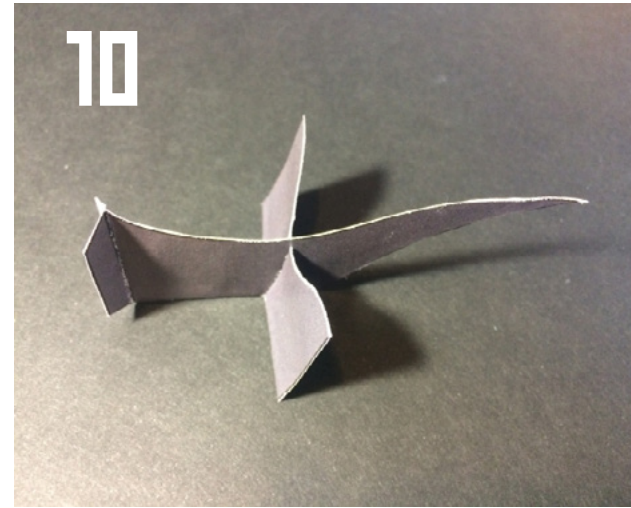
Cut a notch on dotted lines once E part is folded and stuck on itself

9



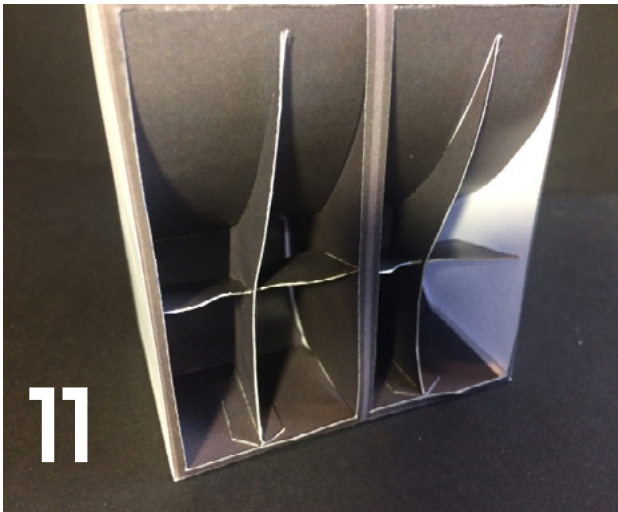
Cut a notch on dotted lines once D part is folded on itself. Think to fold the two lower tabs

10



Imbricate shapes one in other helping with the notches

11



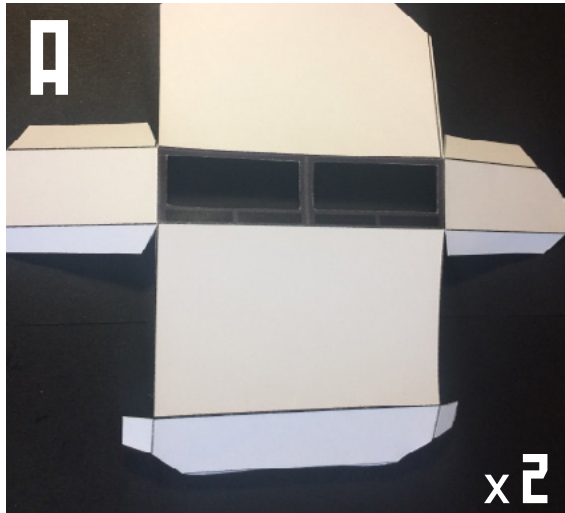
Stick the crosses on sides of recess.
Careful, it gotta be in the good way :
The D part with the tabs is horizontal.
The one without must have the curved part below.

STEP 4

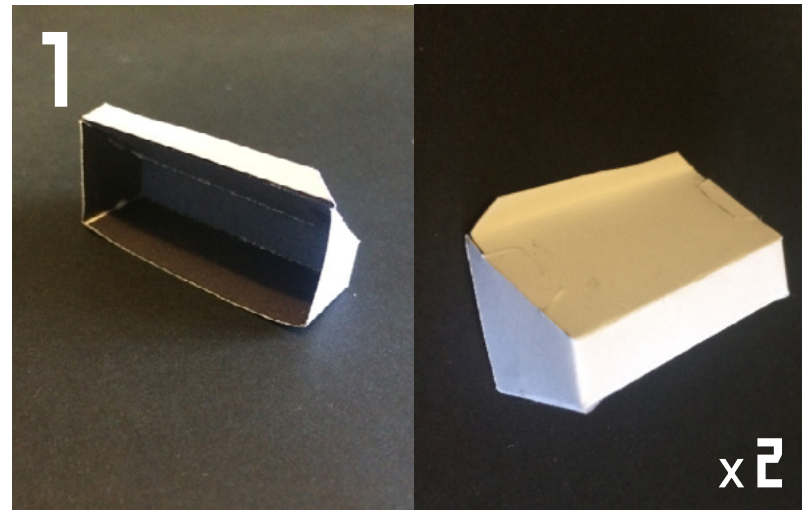
Assembly/Gluing

Do it twice

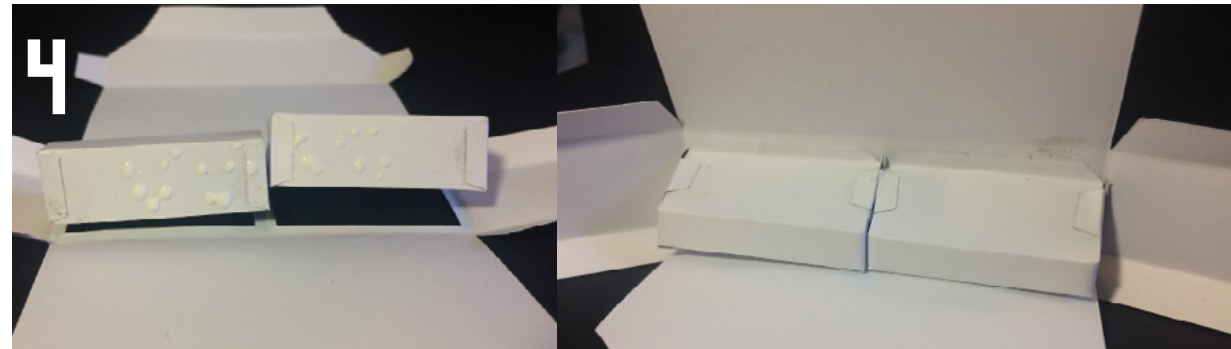
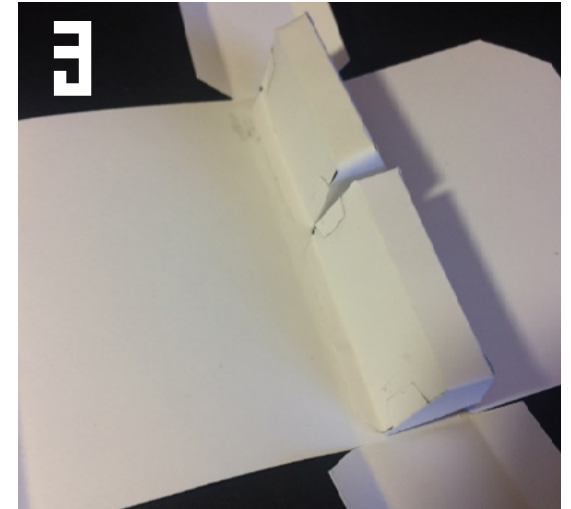
Parts to use



Stick the B part like this



Stick the precedent part on A part, starting with the high tabs.



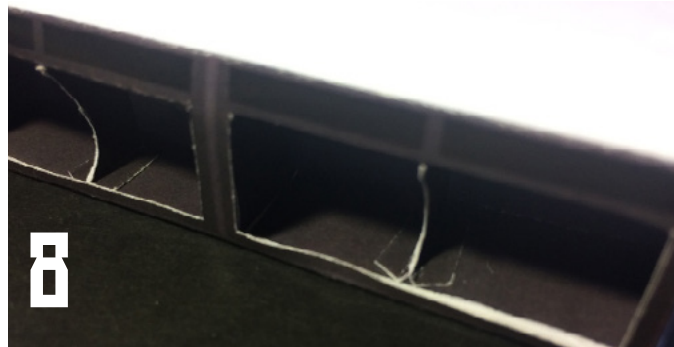
Stick the low part of B parts, putting glue only on one half, like picture above. (on left)



STEP 4.1



Fold C part and stick on itself



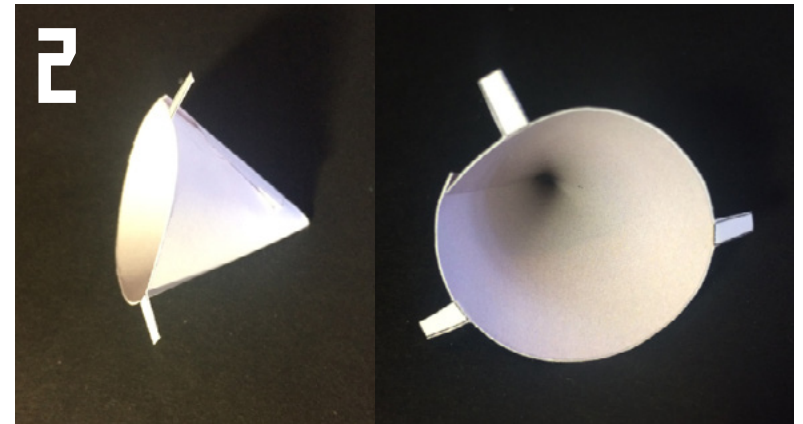
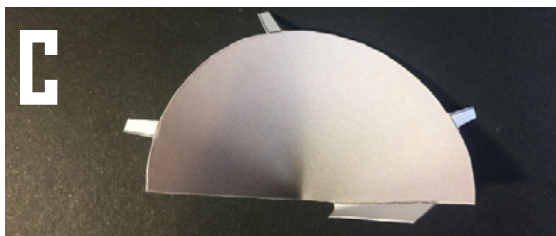
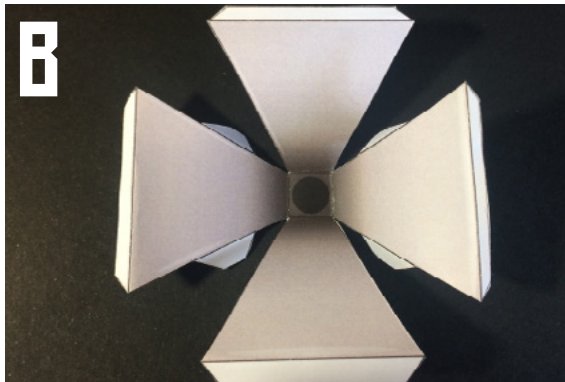
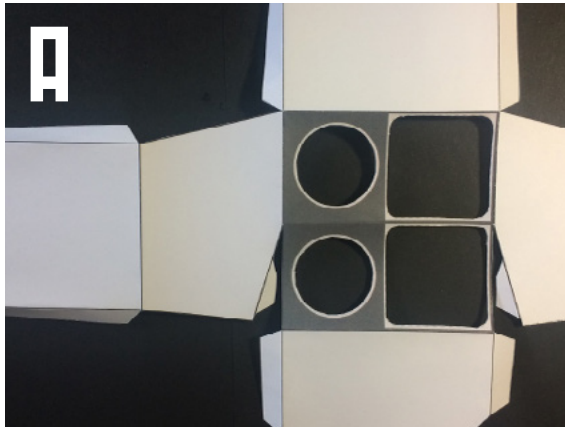
Stick in the center of holes from final part using the tabs

STEP 5

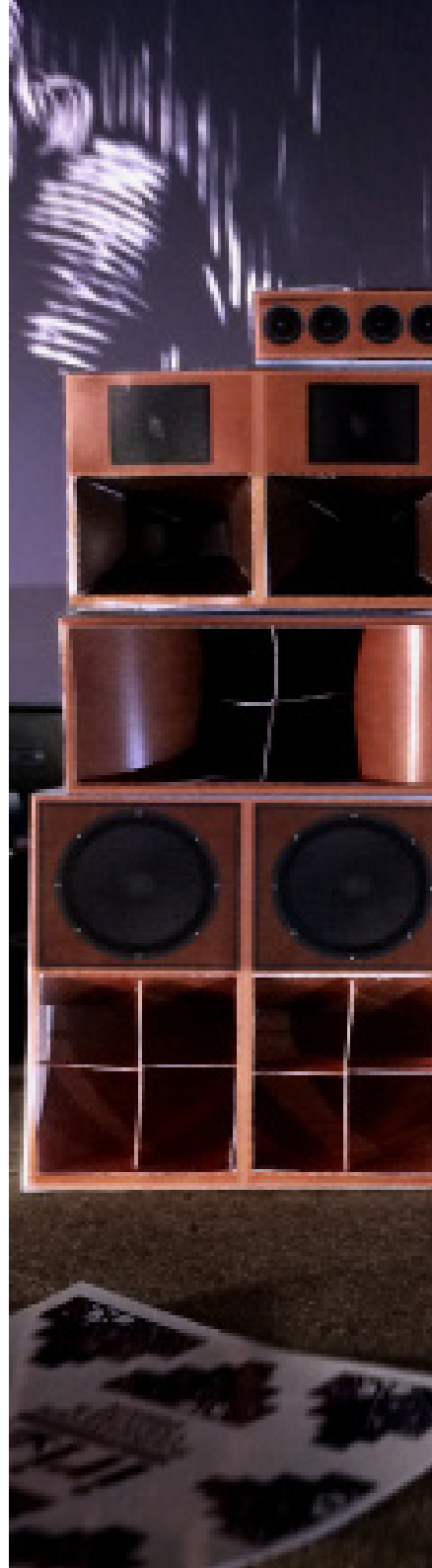
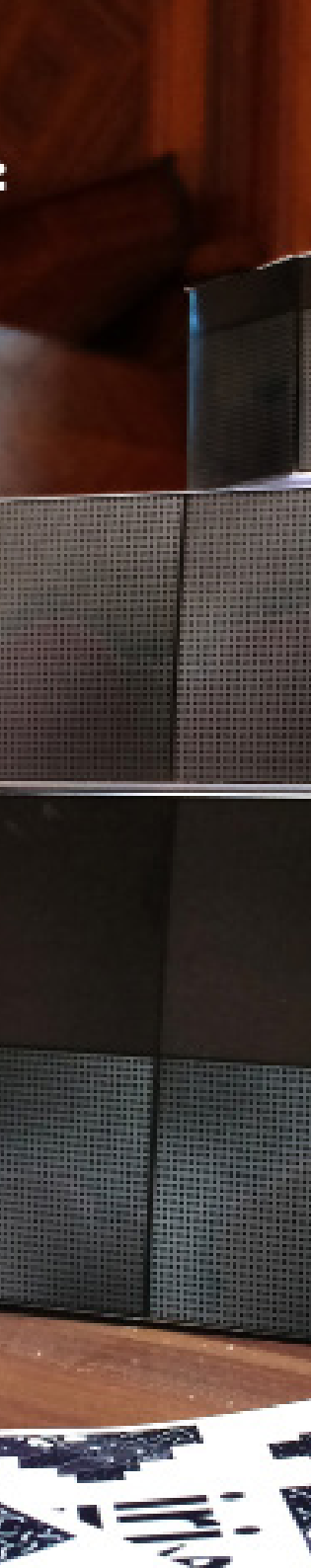
Assembly/Gluing

Do it twice

Parts to use



Start by gluing the B parts. Careful to the size of tabs. You gotta place correctly B part according to tabs



ENJOY

